

Refrigeration Equipment Slide Top Bottle Cooler 37 " Long

ITEM # _____
MODEL # _____
NAME # _____
SIS # _____
AIA # _____



738294 (KCHBC36)

Slide Top Bottle Cooler 37
" Long

Short Form Specification

Item No. _____

36 " wide Bottle cooler with sliding top. Exterior back and side panels in painted steel, exterior bottom panel in galvanized steel, top panel in 304 stainless steel; interior side panels in 430 stainless steel, interior back panel, interior bottom panel and worktop in 304 stainless steel. Fin & tube condenser to improve the performances in high temperature environments. Automatic Defrost Cooling System and electronic temperature control. Vinyl-coated steel adjustable dividers and locking lids. R600a gas in refrigeration circuit. ETL Safety and Sanitation certified.
3/5 Years warranty.

Main Features

- Fin & Tube Condenser improves performance in high temperature environments.
- Automatic Defrost Cooling System provides worry-free performance.
- Vinyl-Coated Steel adjustable dividers to customize bottle storage effortlessly.
- Locking doors.
- External temperature display.
- Cabinet completely insulated with high density polyurethane for low environmental impact.
- Locking lids.

Construction

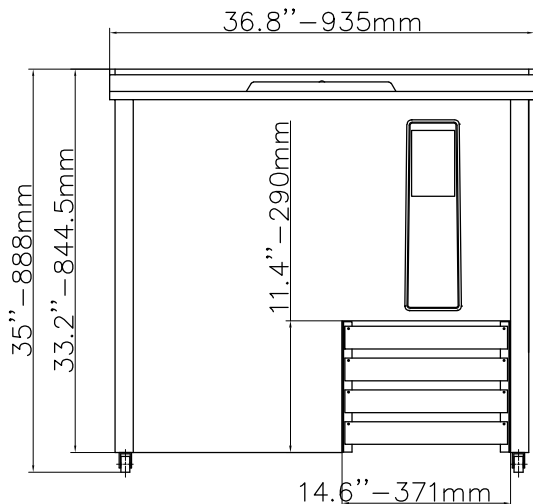
- Pre-wired heavy duty power cord.
- Electronic control to select temperatures.

Sustainability

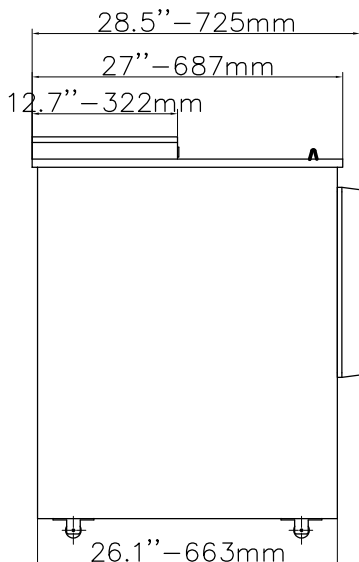
- CFC and HCFC free (ecological refrigerant type: R600a).
- High efficiency components to minimize the energy consumption still guaranteeing the highest performances.

APPROVAL: _____

Front

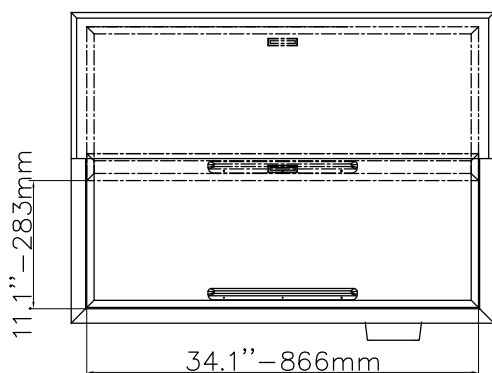


Side



El = Electrical connection

Top



Electric

| | |
|------------------------|------------------|
| Supply voltage: | 115 V/1 ph/60 Hz |
| Electrical power, max: | 0.16 kW |
| Plug type: | USA NEMA 5-15P |

Capacity:

| | |
|-----------------|------------|
| Gross capacity: | 10 cu.feet |
|-----------------|------------|

Key Information:

| | |
|-------------------------------|---|
| Warranty: | 3 / 5 years |
| External dimensions, Width: | 36 13/16" (935 mm) |
| External dimensions, Depth: | 28 9/16" (725 mm) |
| External dimensions, Height: | 34 15/16" (888 mm) |
| Number and type of doors: | 1 |
| Internal Dimensions (depth): | 26 1/16" (662 mm) |
| Internal Dimensions (height): | 22 15/16" (583 mm) |
| Internal Dimensions (width): | 60 3/8" (1534 mm) |
| Shipping height: | 39 3/4" (1010 mm) |
| Shipping weight: | 187 lbs (85 kg) |
| Shipping volume: | 25.6 ft ³ (0.72 m ³) |
| Type of external material: | Black Prepainted Steel |
| Type of internal material: | Stainless Steel |
| Approvals | ETL C&US;ETL SANITATION |

Refrigeration Data

| | |
|-----------------------------|--------------|
| Condenser type: | Fin & tube |
| Operating temperature min.: | 32 °F |
| Compressor power: | 1/10 hp |
| Operating temperature max.: | 41 °F |
| Defrost type: | Auto Defrost |

Sustainability

| | |
|----------------------|----------|
| Current consumption: | 1.8 Amps |
| Refrigerant type: | R600a |
| Refrigerant weight: | 60 g |

